

panorama



LIVING WALLS

Ingenious Futuristic Surreal

CALL US WHAT YOU LIKE

'We are no ordinary modular walls. We are alive.

We inspire with dynamic colours, we warm you up or give you goose bumps. We change our appearance. We produce the most beautiful sounds. We arouse your imagination and stimulate achievements. Discover us. Hear us. Feel us.'

At Maars, our fascination with the wonderful influence the environment can have on a person continues to grow. More and more is becoming known about the stimulating effect of the spaces in which people spend their time. Can a hospital room contribute to faster recuperation? Can modular walls generate positivity or improve learning performances at schools? Maars wants to know and experience everything. As such, Maars Living Walls symbolises a wealth of opportunities which the modular walls offer to enable you to feel at one with your environment and get the best out of yourself. This is achieved by smartly integrating acoustics, air, light, sound, colour and images. The use of the latest technologies creates innovative concepts which create a living environment in which you become inspired, perform better and feel safe. For example, Maars has put together a colour pallet for care, the so-called Healing Colours, which have been proven to contribute to recovery. The Maars Living Walls interact with you and create exactly the environment you need. To do so, we look at colour, shape and use of materials, however unusual. Maars follows the latest trends and knows how to make it specifically applicable in its industry.

livingw alls



Transparency and flexibility at its best

Maars Panorama allows you to create maximum transparency in your project. This wall system is characterised by the absence of visible joints and vertical profiles. Thanks to the ingenious construction of the system, a Panorama wall is a completely flat glass wall that is easy to assemble with a minimum of components.

Maars Panorama's high flexibility is simply the result of a clever click-and-fix system. Each Panorama wall can be moved if a different layout is desired. Moreover, this system makes Panorama fully compatible with other Maars partition walls.

Elements for light, air, sound, multimedia and climate control can be integrated in a combination of closed wall elements, as well as cupboards, panels and furniture elements. Discover the many surprising possibilities under the 'Living Options' button on www.maarslivingwalls.com or in the 'Living Options' brochure.

livingwalls

A modern office meeting room with a glass wall, a long white conference table, and green chairs. The room is brightly lit with recessed ceiling lights and a long pendant light fixture. The floor is covered in grey square tiles. The glass wall reflects the room's interior and the surrounding office space.

create

an advanced working space

Project: NESS
Architect: Ori Halevi
Photographer: Uzi Porat

combine

aesthetics with efficiency

**Transparency
promotes well-being
and productivity**

Transparency in the work environment is not only a way to promote an organisation's corporate culture, enhance the visual contact between employees and facilitate new, flexible ways of working. Transparency also creates optimum daylight conditions in the workplace. Research has shown that this has a positive impact on our overall sense of well-being and therefore on our productivity.

The Maars Panorama wall system is very "closed" in one respect: the soundproofing values are so high that acoustic comfort is guaranteed.

Livingw
alls

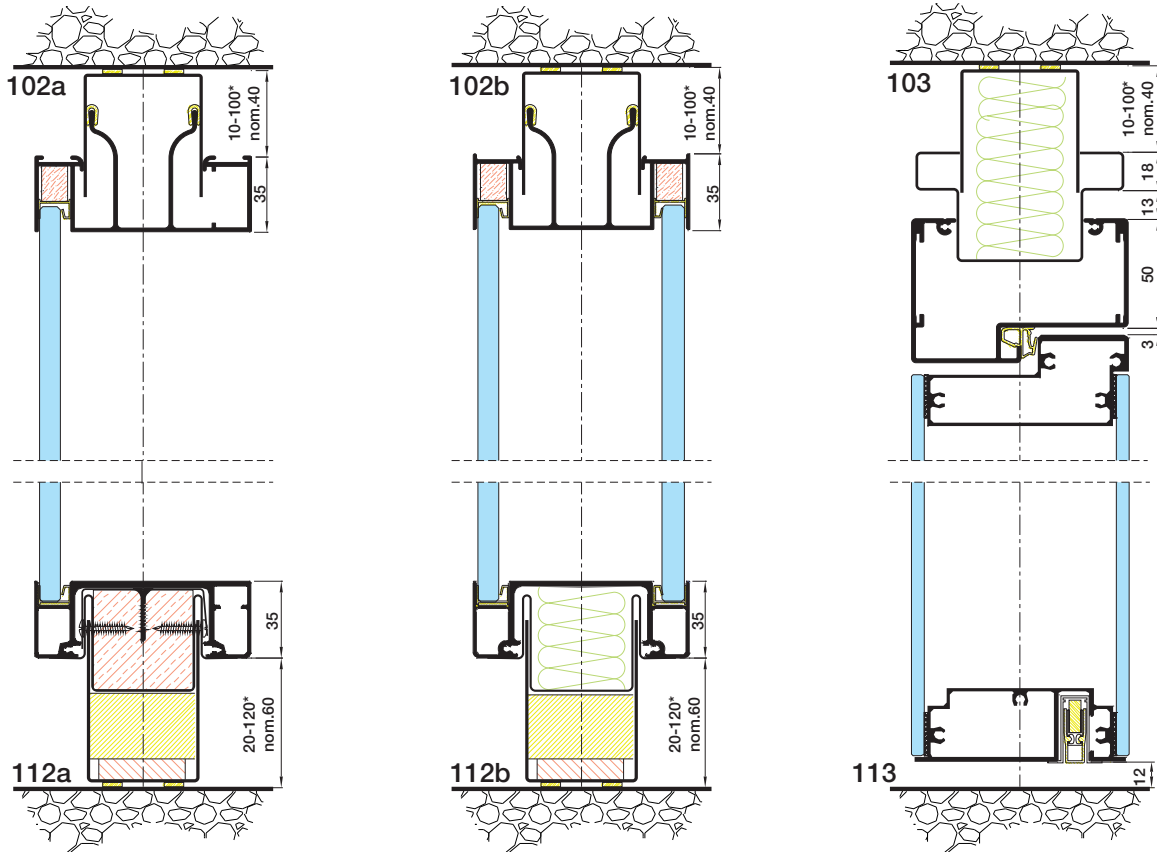


**All-glass solutions
for corners, joints
and wall connections**

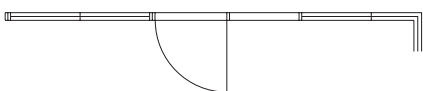
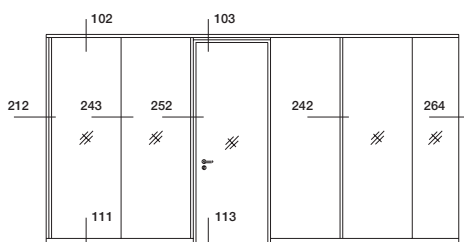
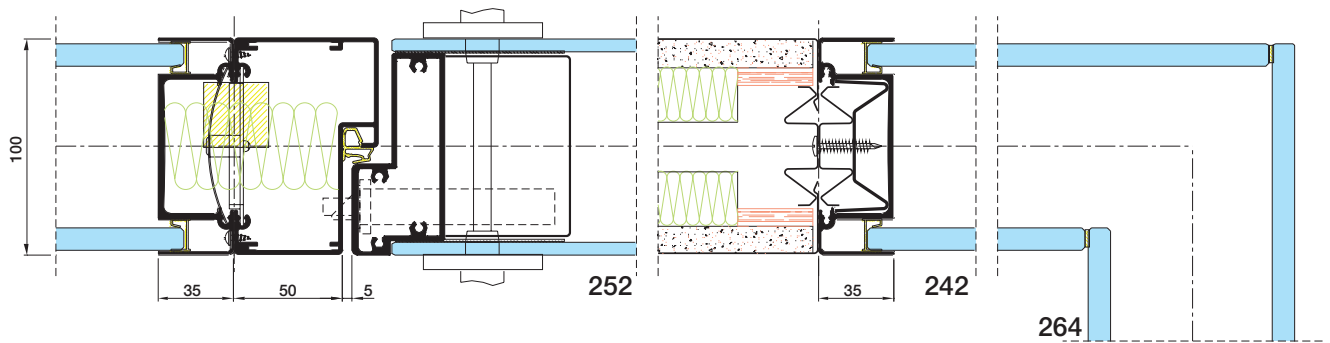
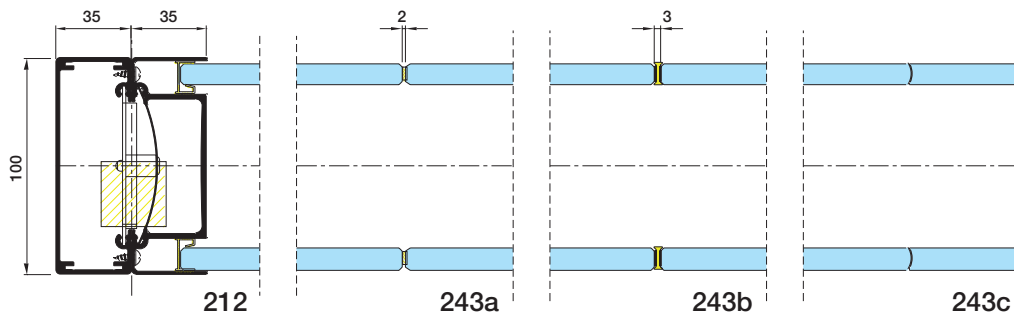
The Panorama wall system offers two options for connecting glass panels. We can create joints with convex/concave glass without having to use other materials. The other possibility is to use extremely thin and barely visible glass tape to join polished cut glass. No vertical profiles or silicone compounds are needed, which results in a sleek glass wall. You can choose from fully glazed or closed corners and wall joints. A minimalist 0 mm joint is all you see between the glass panels and door frames. The recessed floor and ceiling profiles also add to the beautiful sleek design of each Panorama wall.

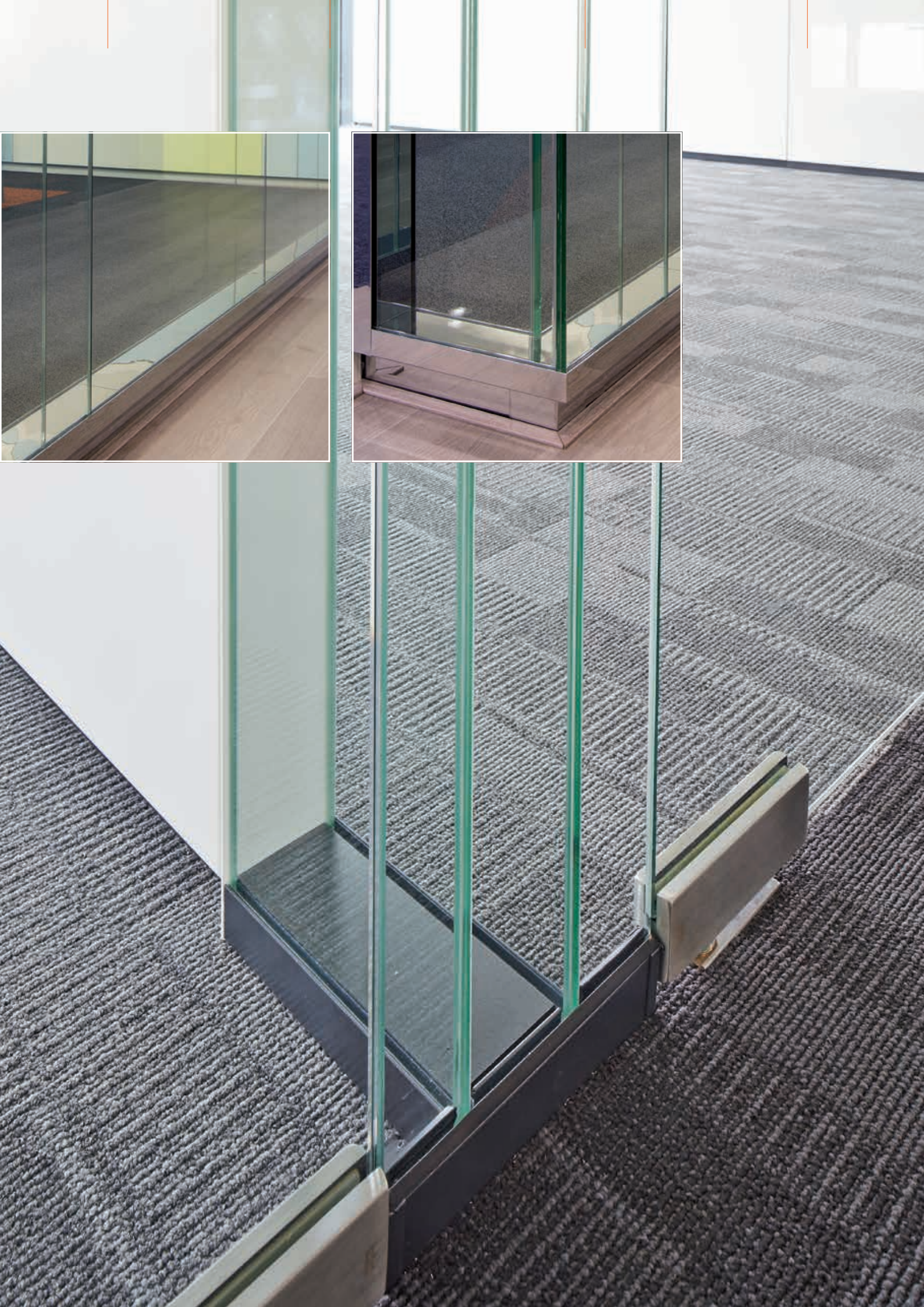
You can choose from a wide selection in the doors range to complement the wall, from functional to high-spec architectural design. Optionally, the doors are available in the exact thickness of the wall for an even sleeker and flush result. Maars can also help you select the right combination of doors and accessories. See our doors brochure for the complete doors range.

livingw
alls



*Deviations of nominal sizes are optional. Standard tolerance +/- 13 mm on nominal size





Technical specifications

DESCRIPTION

Demountable single or double glazed partition without vertical frames between glass panes. Compatible with String² for solid partition and/or doorframes.

STRUCTURE

- **GLAZED ELEMENTS:**
 - Thickness: 100 mm
 - 10 and/or 12 mm thick tempered or laminated glass
 - Off-center single glazing or double glazing
- **SOLID ELEMENTS:**
(in combinations with String²)
 - Thickness: 100 mm
 - Uprights/Studs: steel sections, 2 x 0,8 mm clinched clamping stud
 - Panels: Steel, galvanized, 0,8 mm on 12,5 mm plasterboard backing
 - 18 mm melamine finished particleboard panels
 - 18 mm veneer finished particleboard panels
 - Fabric covered steel or particleboard panels
 - Internal filling: mineral wool
 - Floor and ceiling U-channels: 1,5 mm galvanized steel sections
- **DOOR ELEMENTS:**
 - Doorframe: aluminium or steel frames provided with 3 hinges
 - Door leaves: Wide range of doors from 40 mm or 100 mm double glazed doors.
Check our doors range for further options

JOINTS

0 mm joint or 5 mm joint for solid modules.
Glass panels are connected by transparent silicon tape, polythylene terephthalate or polycarbonate sections. Glass panels also available with convex/concave worked edges.

FINISHES

- **SURFACE TREATMENT:** for all visible metal parts: environmental friendly epoxy powder coating approx. 80µ thickness.
- **COLOURS:** according to Maars colour chart. Other colours possible after consultation.
- **GLAZING:** a variety of options is available, such as sandblasting, film, painted glass. Other manifestations possible after consultation.

STANDARD DIMENSIONS

- Height: 3100 mm
- Width: solid panels 900/1200 mm, glass 900/1200 mm
Other sizes in height or width after consultation.
- Weight: 55/70 kg/m²

INSTALLATION

- **TOLERANCES:**
 - Floor: +/- 13 mm
 - Ceiling: +/- 13 mm
 - Adjustable floor track for easy adjusting of tolerances
- **CONNECTION:**
All solid elements are connected by using clamping studs, enabling easy installation and easy disassembly.
- **INTEGRATION OF ELECTRICAL AND DATA SERVICES**
Perforated clamping studs provide access for wiring and other services. Demountable panelling provide easy access for installation afterwards.

CLEANING

Please check our website for our cleaning and maintenance instructions.

LIVING OPTIONS

Maars offers a wide range of options which can be integrated in our partitioning systems, depending on the type of wall. Ventilation studs, sound panels, cupboards, shelving systems, climate control panels, dynamic lighting, multimedia, panels clad with textile, privacy glass and our wide range of Maars Magnetics. See: www.maarsmagnetics.com.
Check the Living Options brochure and www.maarslivingwalls.com for more information.

ACOUSTICS

Weighted sound reduction index to EN ISO 717-1

- Glazed panels: From $R_w (C ; C_{tr}) = 28 (-1 ; -1)$ dB to $R_w (C ; C_{tr}) = 47 (-2 ; -5)$ dB
- Door, solid: From $R_w (C ; C_{tr}) = 31 (-2 ; -2)$ dB to $R_w (C ; C_{tr}) = 37 (-1 ; -4)$ dB
- Door, glazed: $R_w (C ; C_{tr}) = 39 (0 ; -2)$ dB

FIRE

Not applicable.

Due to our policy of constant improvement our products are subject to change. Please check for the latest details: www.maarslivingwalls.com

Technische Daten

BESCHREIBUNG

Demontierbare, rahmenlose, einfach- oder doppelverglaste Trennwand ohne vertikale Ständer. Kompatibel mit String² für massive Trennwand.

STRUKTUR

- **VERGLASTE ELEMENTE:**
 - Stärke: 100 mm
 - 10 und/oder 12 mm dickes Hart- oder Verbundglas
 - Außer mittige Einfach- oder Doppelverglasung
- **MASSIVE ELEMENTE:**
(in Kombination mit String²)
 - Stärke: 100 mm
 - Stützen/Ständer: Stahlprofile, 2 x 0,8 mm gestauchte Spannschraube
 - Oberflächen: Stahl, verzinkt, 0,8 mm auf 12,5 mm Rückwand aus Gipskarton
 - 18 mm melaminbeschichtete Spanplattenpaneele
 - 18 mm furnierbeschichtete Spanplattenpaneele
 - Stoffbezogene Stahl- oder Spanplattenpaneele
 - Innerer Füllstoff: Mineralwolle
 - Boden- und Decken- U-Profile: 1,5 mm verzinkte Stahlprofile
- **TÜRELEMENTE:**
 - Türrahmen: Aluminiumrahmen mit 3 Bändern.
 - Türblätter: Breites Sortiment Türen, von 40 mm bis 100 mm.Weitere Optionen finden Sie in unserem Türenprogramm

FUGEN

Nullfuge oder 5 mm-Fuge für massive Module. Glaspaneele werden durch transparentes Silikonband, Polyethylenterephthalat- oder Polycarbonatprofile verbunden. Glaspaneele sind auch mit konvex/konkav bearbeiteten Kanten lieferbar.

FINISHES

- **OBERFLÄCHENBEHANDLUNG:** Bei allen sichtbaren Metallteilen: Umweltfreundliche Epoxidpulverbeschichtung, etwa 80 µ Dicke.
- **FARBEN:** Nach der Maars Farbtafel. Weitere Farben nach Absprache.
- **VERGLASUNG:** Eine Vielzahl von Optionen steht zur Auswahl, zum Beispiel Sandstrahlen, Folie, lackiertes Glas. Weitere Gestaltungsformen nach Absprache.

STANDARD ABMESSUNGEN

- Höhe: 3100 mm
- Breite: Massive Elemente 900/1200 mm, Verglaste Elementen 900/1200 mm.

Andere Größen in Höhe oder Breite nach Rücksprache.

- Gewicht: 55/70 kg/m²

INSTALLATION

- **TOLERANZEN:**
 - Boden: +/- 13 mm
 - Decke: +/- 13 mm
 - Verstellbare Bodenschiene zur einfachen Adaption von Toleranzen
- **VERBINDUNG:**
Alle massiven Elemente werden durch Spannschrauben verbunden. Dies ermöglicht eine einfache Installation und den späteren problemlosen Zugang.
- **INTEGRIERTE STROMVERSORGUNG UND DATENÜBERTRAGUNG**
In die Perforierte Stützen kann man die Verkabelung aufnehmen und das ist leicht ausführbar weil wir Demontable Paneele verwenden.

REINIGUNG

Für Reinigungs- und Pflegehinweise ziehen Sie bitte unsere Website zu Rate.

LIVING OPTIONS

Maars bietet eine Vielzahl von Optionen, die je nach Wandtyp in unsere Trennwandsysteme integrierbar sind. Lüftungsstege, Schallschutzpaneele, Schränke, Regalsysteme, Klimatisierungspaneele, dynamische Beleuchtung, Multimedia, mit Textilien verkleidete Paneele, Privacy-Glas und unser umfangreiches Maars Magnetics Programm. Siehe unter: www.maarsmagnetics.com. Weitere Informationen in der Living Options-Broschüre und unter www.maarslivingwalls.com.

AKUSTIK

Bewertetes Schalldämmmaß nach DIN EN ISO 717-1

- Verglaste Paneele: Ab $R_w (C ; C_{tr}) = 28 (-1 ; -1)$ dB bis $R_w (C ; C_{tr}) = 47 (-2 ; -5)$ dB
- Tür, Voll: Ab $R_w (C ; C_{tr}) = 31 (-2 ; -2)$ dB bis $R_w (C ; C_{tr}) = 37 (-1 ; -4)$ dB
- Tür, verglast: $R_w (C ; C_{tr}) = 39 (0 ; -2)$ dB

FEUERWIDERSTAND

Nicht anwendbar.

Wir streben nach kontinuierlicher Verbesserung unserer Produkte. Daher können diese Veränderungen unterliegen. Die aktuellsten Details finden Sie unter: www.maarslivingwalls.com

Spécifications techniques

DESCRIPTION

Partitionnement double ou simple vitrage démontable sans crampons verticaux. Compatible avec String² pour un partitionnement solide.

STRUCTURE

- **ÉLÉMENTS VITRÉS:**
 - Épaisseur: 100 mm
 - Vitrage renforcé ou laminé 10 ou 12 mm
 - Vitrage simple excentré ou double vitrage
- **ÉLÉMENTS SOLIDES**
(en combinaison avec le String²)
 - Montants / Supports: sections en acier sections, 2 x 0,8 mm crampon de serrage
 - Panneaux en acier galvanisé, 0,8 mm, collée sur une plaque de plâtre de 12,5 mm
 - Panneaux agglomérés de 18 mm avec finition mélamine
 - Panneaux agglomérés 18 mm avec finition laminée
 - Panneaux en acier recouverts de tissu ou panneaux agglomérés
 - Passages sol et plafond en U forme: sections acier galvanisé de 1,5 mm
- **ÉLÉMENTS DE PORTE:**
 - Châssis: châssis en aluminium ou en acier avec 3 charnières
 - Modèles de portes: Choix allant de portes de 40 mm ou 100 mm recouvertes avec des feuilles en acier aux portes avec double vitrage.
Découvrez notre programme de portes pour voir les autres possibilités

JOINTS

Jointure 0 mm ou 5 mm pour des modules solides. Les panneaux vitrés sont connectés par de la bande silicone transparente, du polytétréphthalate d'éthylène ou des sections en polycarbonate. Les panneaux vitrés sont également disponibles avec des bords de finition convexe/concave.

FINITIONS

- **TRAITEMENT DE LA SURFACE:** pour toutes les parties métalliques visibles: couche de poudre epoxy, épaisseur +/- 80µ.
- **COULEURS:** en fonction du nuancier de Maars. Toutes autres couleurs sur consultation.
- **VITRAGE:** une variété d'options est disponible, par exemple le pistolage au sable, une pellicule, des vitres peintes. Toutes autres variantes sur consultation.

STANDARD DIMENSIONS

- Hauteur: 3100 mm
- Largeur: panneaux solides 900/1200 mm, éléments

vitrés 900/1200 mm.

Autre dimensions in hauteur ou largeur sur consultation

- Poids: 55/70 kg/m²

INSTALLATION

- **TOLÉRANCES:**
 - Sol: +/- 13 mm
 - Plafond: +/- 13 mm
 - Chenille au sol réglable pour une adaptation aisée des tolérances
- **CONNEXION:**
Tous les éléments solides sont reliés au moyen de tenons et montant de serrage permettant une installation simple et un accès aisé après l'installation.
- **INTÉGRATION DE SERVICES ÉLECTRIQUES ET DE DONNÉES**
Les serrages perforés permettent le passage de câbles et autres.
Les panneaux offrent un accès aisé lors d'installations ultérieures.

ENTRETIEN

Prenez connaissance de notre site internet pour l'entretien et la maintenance.

LIVING OPTIONS

Maars offre une gamme d'options qui peuvent être intégrées dans nos systèmes de compartimentage, en fonction du type de mur. Des tenons de ventilation, des panneaux d'insonorisation, des placards, des systèmes d'étagères, des tableaux de contrôle de la climatisation, un éclairage dynamique, multimedia, des panneaux recouverts de tissu, des vitrages fermés, et notre gamme de Maars magnétiques. Allez sur le site: www.maarsmagnetics.com. Découvrez la brochure Living Options sur le site www.maarslivingwalls.com

ACOUSTIQUE

Indice pour l'évaluation de la réduction sonore selon les normes EN ISO 717-1

- Panneaux vitrés: De R_w (C ; Ctr)= 28 (-1 ; -1) dB à R_w (C ; Ctr)= 47 (-2 ; -5) dB
- Porte plein: De R_w (C ; Ctr)= 31 (-2 ; -2) dB à R_w (C ; Ctr)= 37 (-1 ; -4) dB
- Porte vitrée: R_w (C ; Ctr)= 39 (0 ; -2) dB

FEU

Non applicable.

Notre politique vise à améliorer sans cesse nos produits, ils sont susceptibles de changer. Pour les tous derniers détails, veuillez consulter le site: www.maarslivingwalls.com

Technische specificaties

OMSCHRIJVING

Demonteerbare glazen systeemwand, enkel of dubbel beglaasd, zonder verticale profielen tussen het glas. Te combineren met String² gesloten panelen en/of deurkozijnen.

CONSTRUCTIE

- **BEGLAASDE ELEMENTEN:**
 - Wanddikte: 100 mm
 - 10 en/of 12 mm dik gehard of gelamineerd glas
 - Niet-gecentreerde enkele of dubbele beglazing
- **GESLOTEN ELEMENTEN:** (combinatie met String²)
 - Wanddikte: 100 mm
 - Stijlen: 2 x 0,8 mm dikke geklonken klemstijl
 - Panelen: staal, gegalvaniseerd, 0,8 mm dik op een 12,5 mm dikke gipsplaat
 - 18 mm spaanplaten v.v. een melamine of kunststof toplaag
 - Met stof beklede stalen panelen
 - Vulling: steenwol
 - U-profielen op de vloer en het plafond: 1,5 mm dikke gegalvaniseerd stalen delen
- **DEURELEMENTEN:**
 - Deurkozijn: aluminium of staal v.v. 3 scharnieren
 - Deuren: breed assortiment van 40 mm of 100 mm dikke deuren.
Bekijk ons deurenprogramma voor de mogelijkheden

VERBINDINGEN

0 mm of 5 mm dikke verbinding voor gesloten elementen. Glazen panelen zijn verbonden met transparant silicone tape, polyethyleentereftalaat of polycarbonaat delen. Glazen panelen zijn tevens verkrijgbaar met convex/concaaf lopende rand profielen.

AFWERKING

- **OPPERVLAKTEBEHANDELING:** voor alle zichtbare metalen delen: milieuvriendelijke epoxy poedercoating, ca. 80µm dik.
- **KLEUREN:** op basis van de Maars kleurenkaart. Andere kleuren in overleg.
- **BEGLAZING:** meerdere opties mogelijk, zoals zandstralen, gecoat of met folie. Andere vormen in overleg.

STANDAARD AFMETINGEN

- Hoogte: 3100 mm
- Breedte: gesloten panelen 900/1200 mm, glas 900/1200 mm

Afwijkende maten in hoogte en breedte in overleg.

- Gewicht: 55/70 kg/m²

INSTALLATIE

- **MARGES:**
 - Vloer: +/- 13 mm
 - Plafond: +/- 13 mm
 - Verstelbare vloerplint waardoor verschillen in de hoogte makkelijk zijn op te vangen
- **VERBINDING:**
Alle elementen zijn verbonden met klemstijlen, waardoor de systeemwand makkelijk te monteren is en achteraf makkelijk te demonteren.
- **INTEGRATIE VAN ELEKTRICITEITS- EN DATAKABELS**
Geperforeerde klemstijlen bieden de mogelijkheid om bedrading op te nemen in de wand. Demontabele panelen maken de wand goed toegankelijk voor wijzigingen achteraf.

ONDERHOUD

Raadpleeg onze website voor schoonmaak- en onderhoudsinstructies.

LIVING OPTIONS

Maars biedt een breed scala aan opties die, afhankelijk van het wandtype, in ons wandstelsel geïntegreerd kunnen worden. Ventilatiestijlen, geluidspanelen, kasten, plankendragers, panelen met klimaatcontrole, dynamic light, multimedia, met stof beklede panelen, privacyglas of Maars Magnetics. Zie: www.maarsmagnetics.com. Bekijk de 'Living Options' brochure en www.maarslivingwalls.com voor meer informatie.

GELUID

Gewogen geluidsisolatie-index voldoet aan EN ISO 717-1

- Beglaasde panelen: Van $R_w (C ; C_{tr}) = 28 (-1 ; -1)$ dB naar $R_w (C ; C_{tr}) = 47 (-2 ; -5)$ dB
- Deur, gesloten: Van $R_w (C ; C_{tr}) = 31 (-2 ; -2)$ dB naar $R_w (C ; C_{tr}) = 37 (-1 ; -4)$ dB
- Deur, beglaasd: $R_w (C ; C_{tr}) = 39 (0 ; -2)$ dB

BRAND

Niet van toepassing.

Omdat wij onszelf continu verbeteren, veranderen onze producten voortdurend. Kijk voor de meest recente details op: www.maarslivingwalls.com



Project: Haifa Chemicals
Architect: Miki Kornhauser
Photographer: Uzi Porat

Thinking of tomorrow

'I generate a wonderful space. I am sustainable. I am built from beautiful, natural products. I will be reused in the future. A strange thought. I feel good, because I am put together well.'

The welfare of people in any space is central to Maars. That includes public space. As such, Maars is constantly looking for sustainable and responsible solutions. New production techniques are not avoided, rather they are sought out and studied. Reducing, reusing and recycling has become deeply rooted within the philosophy of the company. Maars knows that things always can and always must be done better. For instance, we have made enormous progress with environmentally-friendly coatings, CO2-compensation and 5S, 'lean manufacturing'. Maars can also contribute to a higher BREEAM and LEED score. In order to be able to fully control our own quality, environmental and health & safety policy, Maars has set up an integrated operational management system within which all critical processes in terms of quality, environment and safety are assured.

This approach has won broad recognition and Maars is ISO-9001, ISO-14001 certified. By scrutinising the entire production process, we are now able to produce more efficiently and continue to reduce energy consumption. A notable example is the fact that our process water is purified 'in house'.

A white rabbit with long ears and a pink nose is standing on a green lawn. The rabbit is facing right and has its front paws slightly raised. The background shows a dense line of green trees and foliage. The text "Reduce Reuse Recycle" is overlaid on the right side of the image.

Reduce
Reuse
Recycle

Newtonweg 1, PO Box 1000
3840 BA Harderwijk
The Netherlands

T +31 (0)341 46 52 11
F +31 (0)341 46 53 46
info@maars.nl
www.maarslivingwalls.com

